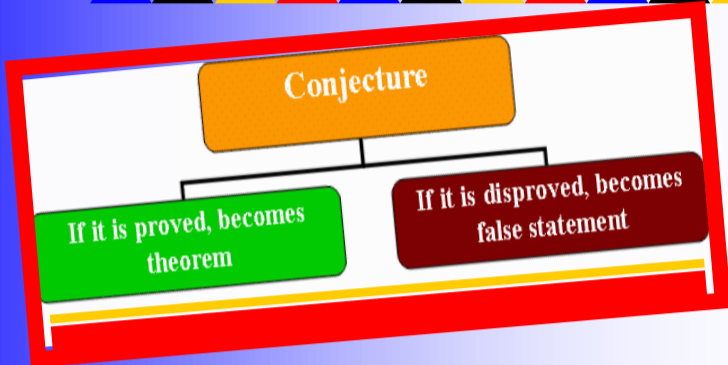
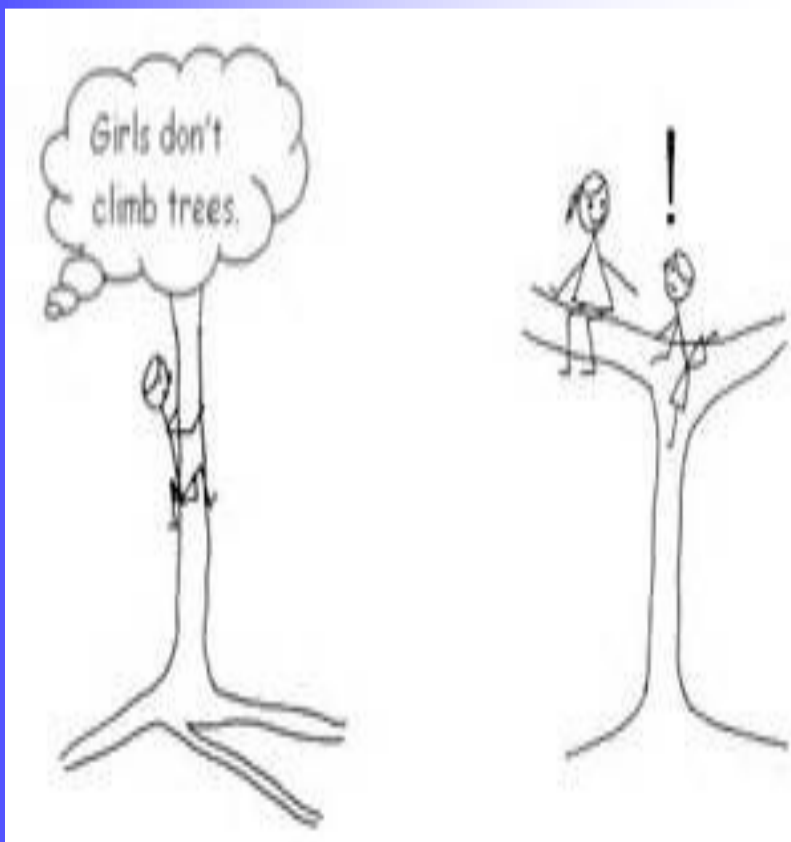
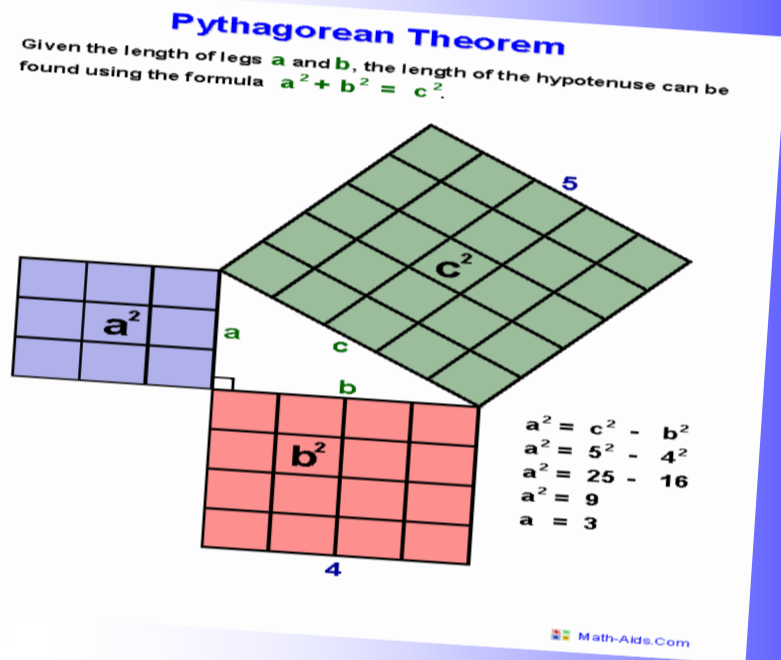


# Conjectures, Theorem and Counter Example



Conjectures: A statement that is believed to be true but not yet proved. Like The sum of the measures of the interior angles of any triangle is 180 degrees

Theorem: A rule in algebra or other branches of mathematics expressed by symbols, or formulae. Like the Pythagorean THEOREM.



Counterexample: An example that opposes or contradicts an idea or theory, an example of a Counterexample is If someone says the opposite of a number is always positive, your counter example would be The opposite of 2 is -2, a negative number.